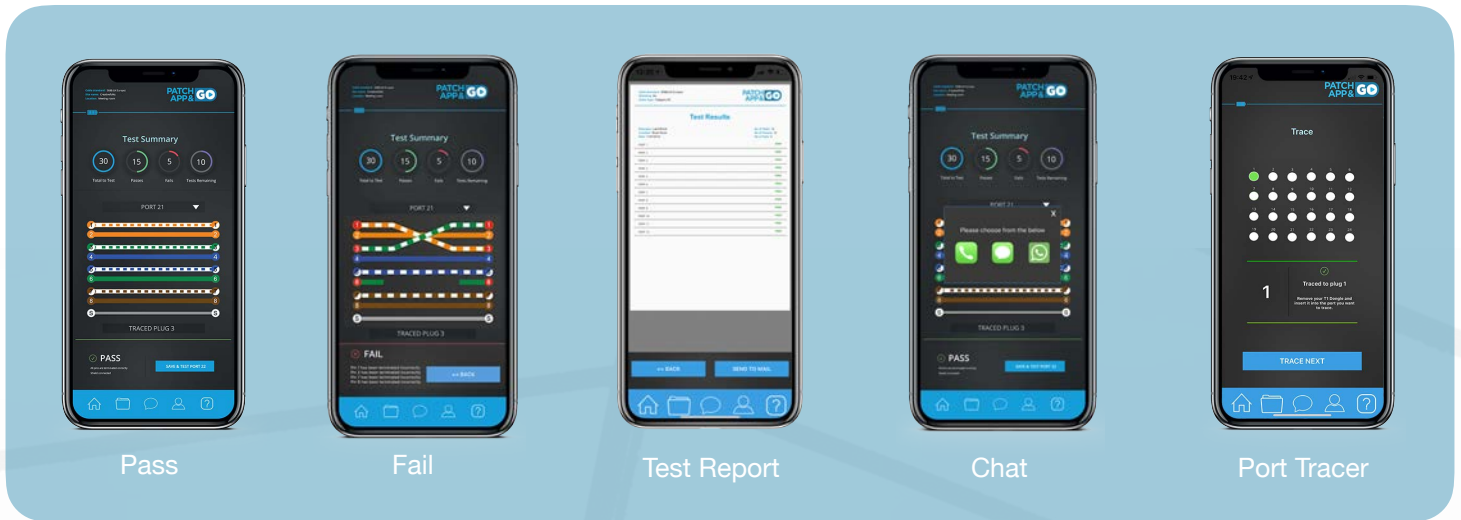


**Cabling Verifier | Cable Tracer | Export Reports**

# Verify & Troubleshoot with your Smart Phone



## Features

- Verify Cabling
- Cable Tracer
- Patch Lead Tester
- 6 Remote Plugs
- Export Test Report
- Rechargeable Battery

**Patch App & Go is the one man Smart Network Tester, powered and operated by any smart phone running on android or IOS.**

Patch App & Go verifies network installations by testing all four pairs of any ethernet cable. The App will visually display results as a pass or fail along with a wiremap graphic showing all connected wires.

The Patch App & Go App also has a tracing feature, allowing locating unidentified network cable within the structured cabling system a quick & easy process.

The App allows you to save test results & export them as a PDF for issuing to customers or for documentation purposes.



# Wiremap Testing & Troubleshooting



## Verify the integrity of your cabling installation.

Test and verify your cabling installation using Patch App & Go Pro's wiremap feature. Identify common faults such as misswires, open pairs, shorts and open ends.

Patch App & Go Pro can be used to test any four-pair UTP & FTP twisted lan cable.

## Test your installation by yourself.

6 Smart Remote Plugs are supplied with Patch App & Go Pro allowing testing to be done independently, without the need of having someone at the remote location.

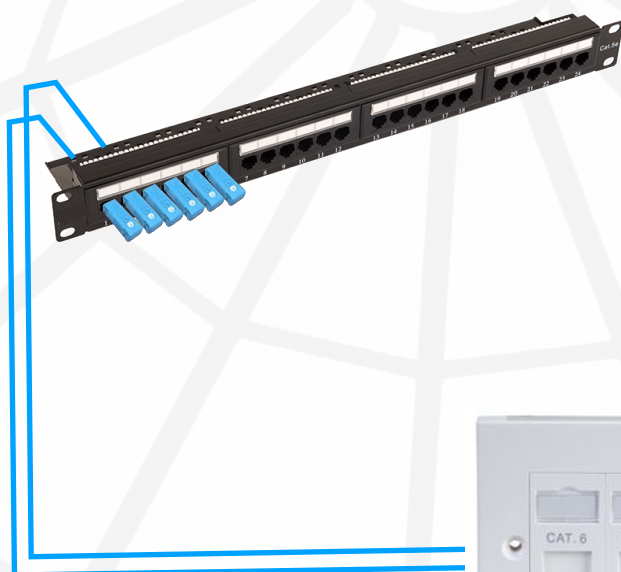
Each Smart Remote Plug is programmed with its own ID from 1 - 6, so as each test is complete the App will confirm the ID of the Smart Remote Plug currently being tested. Additional Remote Plugs are available in packs of 6, numbered up to 48.

## Save & export test results.

When using the multiple test option for testing, Patch App & Go allows you to save your test results and upon completion generate a report. You can then either email the test report to your customer or yourself for filing.

The report includes information such as site details, what cable type you have tested, the date, the number of ports tested along with the number of passes and fails.

PORT	RESULT
PORT 1	FAIL
PORT 2	PASS
PORT 3	FAIL
PORT 4	PASS
PORT 5	FAIL
PORT 6	FAIL
PORT 7	PASS
PORT 8	PASS
PORT 9	PASS
PORT 10	PASS
PORT 11	PASS
PORT 12	PASS
PORT 13	PASS
PORT 14	PASS
PORT 15	PASS
PORT 16	PASS
PORT 17	PASS
PORT 18	PASS
PORT 19	PASS
PORT 20	PASS



# Tracing Unidentified Cables

## Tracing Cables with the Smart Remote Plugs.

Patch APP & GO can be used to trace unidentified cables. By inserting the Smart Remote Plugs into the Patch Panel sockets, Patch App & Go will send a trace from the Wall Outlet to the uniquely numbered Smart Remote Plug located in the Patch Panel, instantly notifying the user of the unique ID of the Smart Remote Plug that it traced, allowing the user to label the cable correctly.

If you choose to work with a colleague at the Patch Panel location, Patch App & Go will notify them that a trace has been made by lighting up the LED on the Smart Remote Plug, thus allowing them to label the cable correctly.



## Technical Information

<b>Minimum Length</b>	No minimum length	
<b>Maximum Length</b>	No maximum length	
<b>Cable Types</b>	Twisted pair Cat 3, Cat 5, Cat 5e, Cat 6, Cat 6a	
	UTP & STP	
<b>Environmental</b>		
<b>Operating</b>	0 to 50°C (32 to 122°F)	
<b>Storage</b>	-20 to 70°C (-4 to 158°F)	
<b>Humidity</b>	10 to 90%, non-condensing	
<b>Physical</b>	<b>T1 Dongle</b>	<b>Smart Remote Plug</b>
<b>Length</b>	84mm	52mm
<b>Width</b>	33mm	14mm
<b>Height</b>	31mm	10mm
<b>Weight</b>	67g	7g
<b>Power</b>	1150mAh Lithium Rechargeable Battery	
<b>Safety</b>	BS EN 61010-1:2010, EN 61326-1:2013, EN 50581:2012	
<b>Certifications &amp; Compliances</b>	CE Conforms to relevant European Union directives	
	RCM Conforms to relevant Australian & New Zealand directives	
	FCC Conforms to relevant directives	

## Ordering Information

<b>Patch App &amp; Go Tester</b>	
PAGT001	Patch App & Go with 6 x Smart Remote Plugs, USB Charging Cable & Soft Carry Case
<b>Additional Remote Plugs Pack of 6 (Pre Programmed with Unique Numbers)</b>	
PAGP/12	Smart Remote Plugs (pack of 6 ) Numbered 7-12
PAGP/18	Smart Remote Plugs (pack of 6 ) Numbered 13-18
PAGP/24	Smart Remote Plugs (pack of 6 ) Numbered 19-24
<b>Patch App &amp; Go Tester &amp; Remote Plug Bundles</b>	
PAGT/B1	Patch App & Go with 12 x Smart Remote Plugs, USB Charging Cable & Soft Carry Case
PAGT/B2	Patch App & Go with 18 x Smart Remote Plugs, USB Charging Cable & Soft Carry Case
PAGT/B3	Patch App & Go with 24 x Smart Remote Plugs, USB Charging Cable & Soft Carry Case
PAGT/B6	Patch App & Go with 48 x Smart Remote Plugs, USB Charging Cable & Soft Carry Case
PAG/PLTK	Patch App & Go Patch Lead Test Kit (Pair)